

Ran(Q69L) Mutant

Catalog Number: 10113

Synonyms: Ras-related nuclear protein, TC4, Gsp1, ARA24

Background: Ran is a member of the Ras-superfamily GTPases. Ran is involved in control of DNA synthesis and of cell cycle progression, and the transport of proteins across the nuclear envelope, as well as in microtubule organization during mitosis.

Amino Acid Sequence: (1-216, Q69L)

MAAQGEPQVQFKLVLVGDGGTGKTTFFVKRHLTG
EFEKKYVATLGVVHPLVFHTNRGPIKFNWVDTA
GLEKFGLRDGYYIQAQCAIIMFDVTSRVTYKNVP
NWRDLVRVCENIPIVLCGNKVDIKDRKVKKSIVF
HRKKNLQYYDISAKSNYNFEKPFLWLARKLIGDPN
LEFVAMPALAPPEVMDPALAAQYEHDLVAQT
TALPDEDDDL

Source: Human, recombinant full length, His6-tag

Expression Host: E. coli

Molecular Weight: 24 kDa

Purity: > 95% by SDS-PAGE

Constituents: 20 mM Tris-HCl, pH 8.0, 150 mM NaCl.

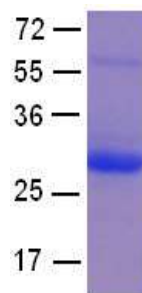
Physical Appearance: White or clear

Concentration: 1 mg/mL

Storage: -80°C

Preparation Instructions

Adding of 10 mM β -mercaptoethanol or 1 mM DTT into the solution to protect the protein is recommended and using of non-ionic detergents such as n-Dodecyl β -D-maltoside (DoDM) or polyethylene detergents (e.g. C₁₂E₁₀) also help to stabilize the protein. Avoid repeated freezing and thawing.



The purity of His-tagged Ran (Q69L) was determined by SDS-PAGE and Coomassie Brilliant Blue Staining.

References

1. Carazo-Salas, R. E. et al., Nature 400: 178-181, 1999.
2. Caudron, M. et al., Science 309: 1373-1376, 2005.
3. Kalab, P. et al., Nature 440: 697-701, 2006.
4. Lee, S. J. et al., Nature 435: 693-696, 2005.
5. Monecke, T. et al., Science 324: 1087-1091, 2009.
6. Ohba, T. et al., Science 284: 1356-1358, 1999.
7. Seewald, M. J. et al., Nature 415: 662-666, 2002.
8. Smith, A. E. et al., Science 295: 488-491, 2002.
9. Walther, T. C. et al., Nature 424: 689-694, 2003.
10. Wiese, C. et al., Science 291: 653-656, 2001.

FOR RESEARCH USE ONLY. NOT FOR DIAGNOSTIC APPLICATIONS